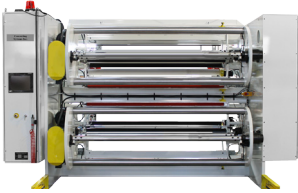


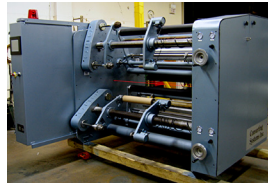
WINDER REBUILDING SERVICES



GEC 1008 DTW Rebuild



CMD RO Rebuild



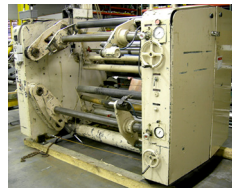
GEC 123 DTW Rebuild



Cooper STW Rebuild



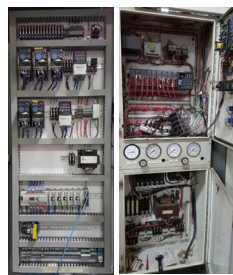
Sano STW Rebuild



CSI has been providing quality rebuilding services for winders and unwinders for years. There are many older winders and unwinders in the field that, with a little help, could continue to produce quality rolls for years to come. We provide any level of rebuild, from a complete tear-down to drive systems only, all upgraded to fit the latest industry standards and backed by a new warranty. Typical winder rebuilds include upgrades to AC sensor-less vector drives, Allen Bradley PLC controls with color touch-screen, pneumatically controlled taper tension and many more.

ON-SITE Winder Control Systems Upgrade

If you own an older, larger winder that is in need of new electrical controls, our on-site upgrade is the perfect solution to perform the necessary upgrades without spending the money and time associated with sending your machines out for rebuilding. CSI performs on-site electrical control system upgrades for GEC, Sano, Filmaster and Black Clausen winders. Ask about others. Typical turnaround: 3-4 weeks.



GEC 318 DT

Rebuilding Loaner Program

Keep your production floor up and running with CSI's Winder Rebuilding Loaner Program. Lease a loaner winder for free while we refurbish your older machine. Typical turn-around time is 8-12 weeks upon receipt of your machine and a P.O.

Insert CSI Loaner Winder Here

(Timeframe based on loaner availability. Customer responsible for round-trip transportation, set-up costs and any damage to the loaner machine.)

For questions about winder rebuilding or loaner services,
please email: sales@convertingsystems.com or call 847.519.0232

Converting Systems Inc. and CSI-Parts
1045 E. Remington Road, Schaumburg, IL 60173

847.519.0232 Tel • 847.519.0241 Fax

www.Convertingsystems.com
www.CSI-Parts.com



Converting Systems Inc.

CSI-Parts
a division of Converting Systems Inc.

Keeping Your Production Floor Up and Running